

# SCOTSMAN

AIR & WATER COOLED MODULAR CONTOUR CUBERS

## CME306

VOLUME PRODUCTION • 24 HOUR



Certified & rated in accordance with ARI standard 810-95	Air-Cooled		Water-Cooled	
	70°/50° lbs./kg.	ARI 90°/70° lbs./kg.	70°/50° lbs./kg.	ARI 90°/70° lbs./kg.
CME306-1	340/154	260/118	330/150	295/134
CME306-32	340/154	260/118	—	—

### VALUE THE DIFFERENCE OF CM<sup>3</sup> ICE MACHINES:

- CM<sup>3</sup> series offers the lowest lifetime operating costs based on lower water and electrical usage. Combine that with a competitive purchase price and the best warranty in the industry and you have the lowest lifetime ownership cost. Period.
- AutoIQ™ Control System monitors and controls the ice machines' functions to ensure consistent ice production and reduce operating costs.
- CM<sup>3</sup> Evaporator is a hot, tin dipped, molecularly bonded plate that has been field tested and proven 99.4% reliable over 5 years.
- Rust-free Polyethylene Base and Food Zone is insulated with 1-1/2" of foam which keeps water and food zone cool to reduce operating costs and is backed by a Lifetime Rust-free Warranty.
- Contemporary styling and stainless steel finish make the CM<sup>3</sup> a perfect addition to any operation.
- Now protected with AquaArmor™ utilizing AgION™, a silver-based anti-microbial compound that reduces the growth of bacteria, microorganisms, algae, mold and slime on ice machine surfaces. AgION is a trademark of AgION Technologies and is registered with the EPA.

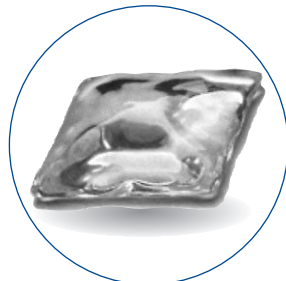
### WARRANTY See your dealer for complete warranty details.

- 3 years parts and labor on all components.
- 5 years parts and labor on the CME evaporator.
- 5 years parts on the compressor and condensor.
- Lifetime Rust Free Food Zone Warranty.

### BIN OPTIONS:



BIN: BH360



APPROX. CUBE SIZE:  
1<sup>3</sup>/<sub>8</sub>" x 1<sup>3</sup>/<sub>8</sub>" x 5<sup>5</sup>/<sub>8</sub>" THICK

SCOTSMAN MODULAR BINS					
Model Number	Dimensions* W"xD"xH"	ARI Bin Capacity	Application Capacity	Finish	Ship Weight lbs./kg.
BH360	22 x 31 x 50	275 LBS.	374 LBS.	SS	135/61

(SS) Stainless Steel with Polyethylene liner. (\*w/6" legs)

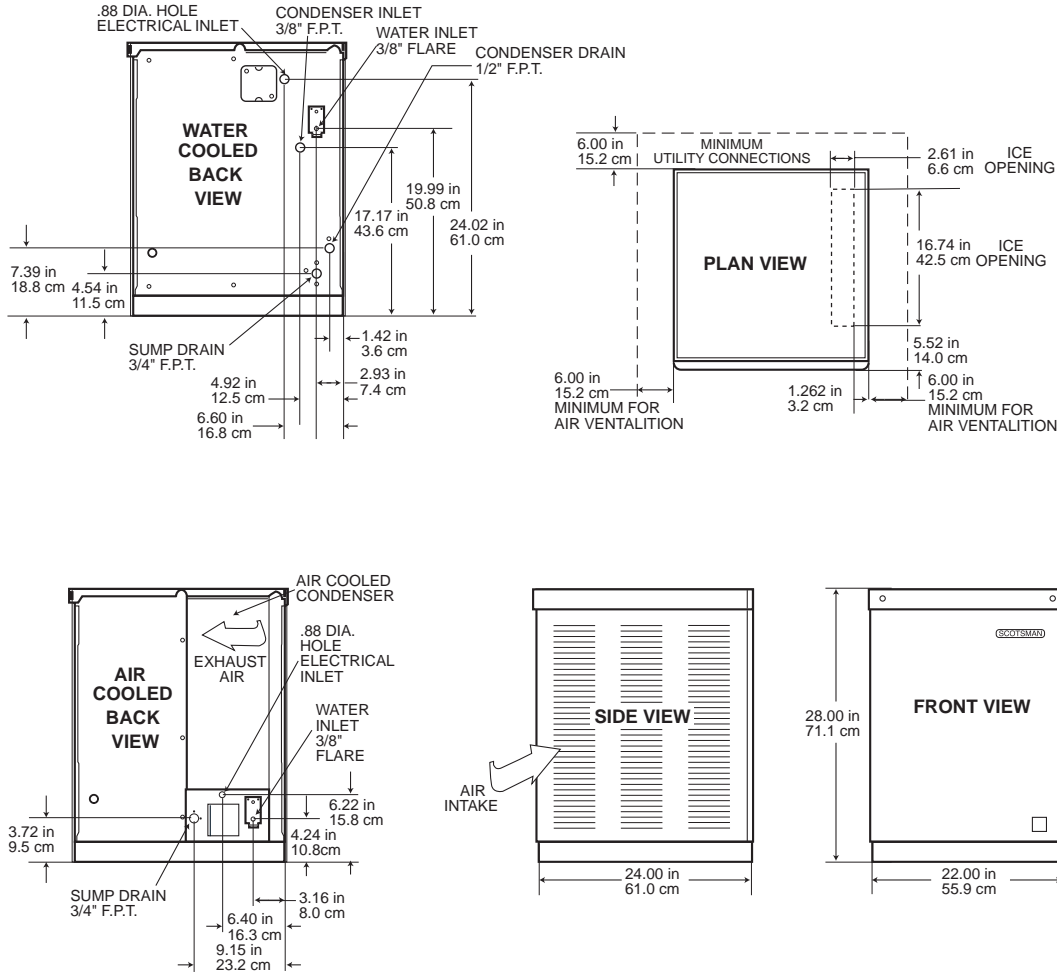
This product qualifies for the following listings:  
  
 Rated in accordance with ARI standard 810-95



CERTIFIED  
  
 9001:2000



# Ice Machine Specifications



All models: Dimensions: W x D x H Unit: 22" x 24" x 28" Shipping Carton: 25" x 27" x 31"

Model Number	Condenser Unit	Basic Electrical Volts/Hz/Phase	Max. Fuse Size or HACR Circuit Breaker	Comp. HP	Circuit Wires	Min. Circuit Ampacity	BTU's per hour	Shipping Weight lbs./kg.	Power Consumption KWH/100 lbs. 90°F/70° F	Water Usage Gallons/100 lbs. 90°F/70° F	
										Potable	Condenser
CME306AS-1C	AIR	115/60/1	20	1/2	2	16	5,500	185/84	8.7	20.0	NA
CME306AS-32C	AIR	208-230/60/1	15	1/2	2	7.9	5,500	185/84	8.7	20.0	NA
CME306WS-1C	WATER	115/60/1	20	1/2	2	16	5,500	185/84	7.1	20.4	174

All units with Stainless Steel finish. Refrigerant-R-404A.

Scotsman's ice machines are not designed for outdoor installations. Scotsman remote condensers are designed for outdoor installations.

Machine requires voltage indicated on rating name plate. Failures caused by improper voltage are not considered factory defects. Extended periods of operation at temperatures exceeding limitations constitutes misuse under the terms of Scotsman Manufacturer's Limited Warranty, resulting in a loss of warranty coverage. Specifications and design are subject to change without notice.

Consult Your Local SCOTSMAN Representative At:

## IMPORTANT OPERATING REQUIREMENTS:

	Minimum	Maximum
Air Temperatures	50°F (10°C)	100°F (37.7°C)
Water Temperatures	40°F (4.4°C)	100°F (37.7°C)
Remote Cond. Temps	-20°F (-28.9°C)	120°F (48.9°C)
Water Pressures	20 PSIG	80 PSIG
Electrical Voltage	-5%	+10%

**YOU'LL VALUE THE DIFFERENCE™**

775 Corporate Woods Parkway • Vernon Hills, IL 60061 • 1-800-SCOTSMAN • Fax: (847) 913-9844  
 Visit our website at: [www.scotsman-ice.com](http://www.scotsman-ice.com) • E-mail: [customer.service@scotsman-ice.com](mailto:customer.service@scotsman-ice.com)